

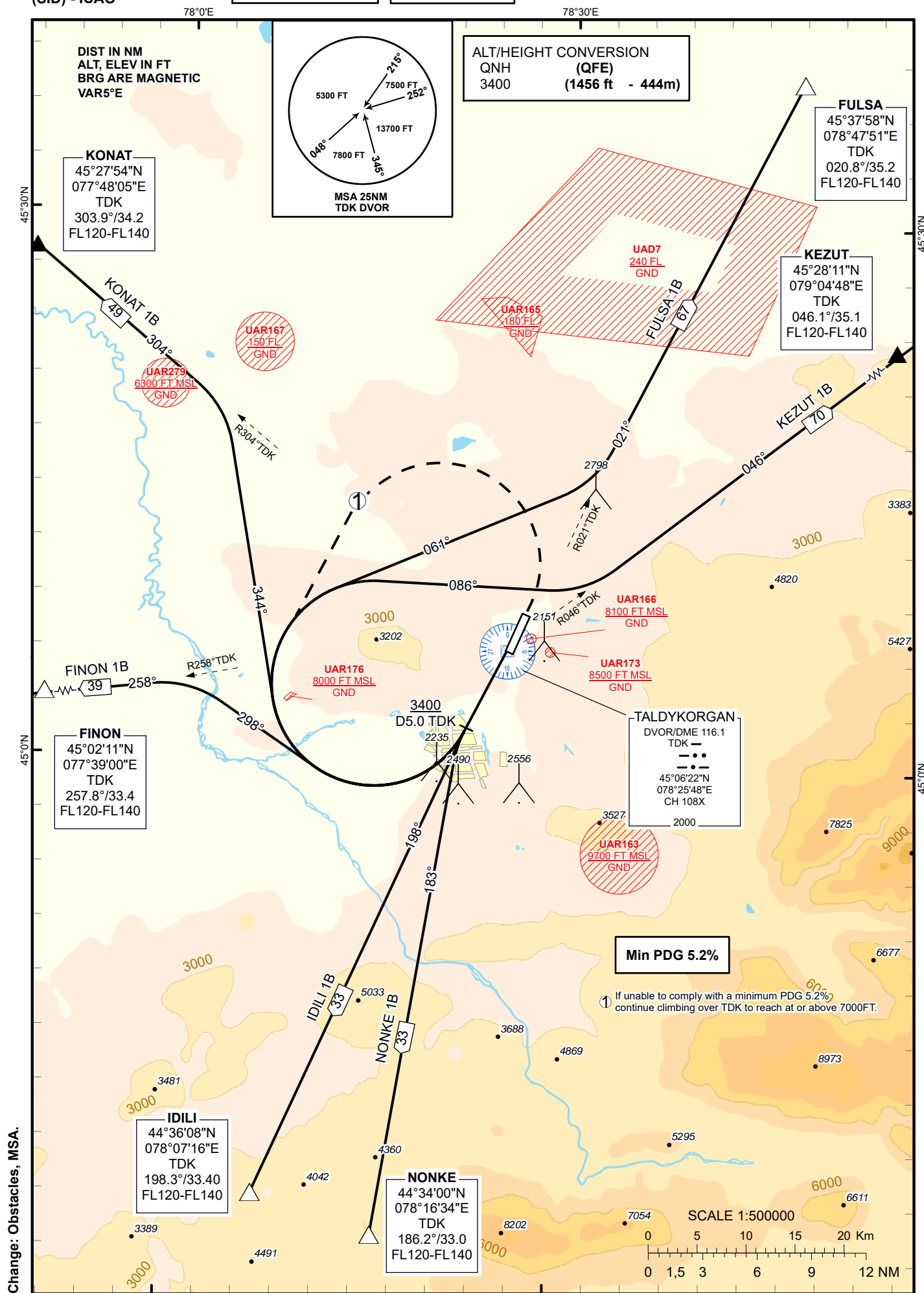
STANDARD DEPARTURE
CHART - INSTRUMENT
(SID) - ICAO

TRANSITION ALTITUDE
10000 FT

TALDYKORGAN
TOWER 127.30

KONAT 1B, FULSA 1B, KEZUT 1B,
NONKE 1B, IDILI 1B, FINON 1B

TALDYKORGAN
RWY 20



STANDARD DEPARTURE ROUTES – INSTRUMENT (SID) TALDYKORGAN RWY 20

FULSA 1B

After take-off climb on track 201° to 3400 or above. At 5.0 NM TDK, turn RIGHT on track 061° until intercept R 021° TDK, then proceed with track 021° to FULSA R 020.8° D 35.2NM with a minimum PDG of 5.2%.
If unable to comply with a minimum PDG of 5.2%, continue climbing over TDK to reach at or above 7000FT.
Cross FULSA at FL120-FL140.

KEZUT 1B

After take-off climb on track 201° to 3400 or above. At 5.0 NM TDK, turn RIGHT on track 086° until intercept R 046° TDK, then proceed with track 046° to KEZUT R 046.1° D 35.1NM with a minimum PDG of 5.2%.
If unable to comply with a minimum PDG of 5.2%, continue climbing over TDK to reach at or above 7000FT.
Cross KEZUT at FL120-FL140.

NONKE 1B

After take-off climb on track 201° to 3400 or above. At 5.0 NM TDK, turn LEFT on track 183° to NONKE R 186.2° D 33.0NM with a minimum PDG of 5.2%.
If unable to comply with a minimum PDG of 5.2%, continue climbing over TDK to reach at or above 7000FT.
Cross NONKE at FL120-FL140.

IDILI 1B

After take-off climb on track 201° to 3400 or above. At 5.0 NM TDK, turn LEFT on track 198° to IDILI R 198.3° D 33.0NM with a minimum PDG of 5.2%.
If unable to comply with a minimum PDG of 5.2%, continue climbing over TDK to reach at or above 7000FT.
Cross IDILI at FL120-FL140.

FINON 1B

After take-off climb on track 201° to 3400 or above. At 5.0 NM TDK, turn RIGHT on track 298° until intercept R 258° TDK, then proceed with track 258° to FINON R 257.8° D 33.4NM with a minimum PDG of 5.2%.
If unable to comply with a minimum PDG of 5.2%, continue climbing over TDK to reach at or above 7000FT.
Cross FINON at FL120-FL140.

KONAT 1B

After take-off climb on track 201° to 3400 or above. At 5.0 NM TDK, turn RIGHT on track 344° until intercept R 304° TDK, then proceed with track 304° to KONAT R 303.9° D 34.2NM with a minimum PDG of 5.2%.
If unable to comply with a minimum PDG of 5.2%, continue climbing over TDK to reach at or above 7000FT.
Cross KONAT at FL120-FL140.